

## SCALE AND ARPEGGIO PATTERNS

The examples below clarify patterns found in this syllabus. Reference should be made to the appropriate syllabus pages for the full requirements for each instrument.

### Rhythm patterns for scales

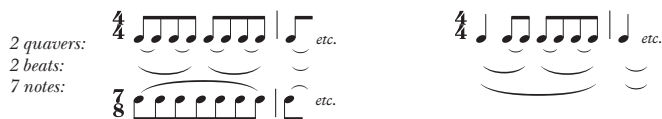
For major and minor scales (all grades) candidates may choose between two rhythm patterns: even notes *or* long tonic. (Chromatic scales should be played with even notes at all grades.)

even notes *or* long tonic



### Slurring patterns for scales

even notes *or* long tonic



### Natural minor scale



### Dominant seventh (*resolving on tonic*)



### Double-stop scales

#### In broken steps





**Double-stop scales (cont.)**

**In parallel**



	<b>even notes</b>	<i>or</i>	<b>long tonic</b>
<i>in sixths:</i>			
<i>in octaves:</i>			

**Patterns for Double Bass only**

**Scales to a sixth**

<b>even notes</b>	<i>or</i>	<b>long tonic</b>
		

**Scales to a twelfth**

<b>even notes</b>	<i>or</i>	<b>long tonic</b>
		

**Arpeggios to a twelfth**



**Scale in broken thirds**



**Scale in running thirds**

